



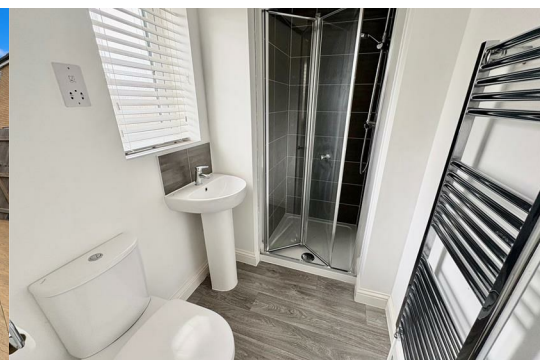
8 Wing Mews Thorney Peterborough PE6 0FU

Offers in excess of £260,000



Modern Three-Bedroom Detached Home | Built 2020 | EPC Rating B | Sought-After Village Location

Situated within the highly regarded development in the picturesque village of Thorney, this beautifully presented modern detached home offers stylish, energy-efficient living in a peaceful yet well-connected setting within Peterborough.



Built in 2020 by Allison Homes, the property has been finished to a high standard throughout and is ready for immediate occupation, making it an excellent choice for families, professionals, or first-time buyers seeking a low-maintenance, contemporary home.

A welcoming entrance hall sets the tone for the property, leading to a bright and spacious kitchen/diner designed for both everyday living and entertaining. With generous work surfaces, ample storage, and a modern finish, this is a true heart-of-the-home space. A convenient cloakroom/WC adds practicality, while the separate living room provides a comfortable and well-proportioned retreat overlooking the rear garden.

Upstairs, the accommodation continues to impress with three well-sized bedrooms. The principal bedroom benefits from a sleek en-suite shower room, while the remaining bedrooms are served by a stylish family bathroom, all finished in a contemporary, neutral design.

Externally, the property enjoys off-road parking for two vehicles and an enclosed rear garden with patio area, offering an ideal space for outdoor dining, relaxation, and family use.

Set within the charming village of Thorney, the home benefits from a quiet residential environment while still providing convenient access to local amenities, countryside walks, and transport links into Peterborough and beyond.

With an excellent EPC rating of B and Council Tax Band C, this home combines modern comfort with strong energy efficiency and low running costs.

A superb turnkey opportunity in a desirable village location, early viewing is strongly recommended to fully appreciate the quality, space, and lifestyle on offer.

Entrance Hall Vinyl flooring, door to:

Living Room 5.59m (18'4") x 3.15m (10'4") Window to front, window to side, two radiators, fitted carpet, TV point.

Kitchen/Dining Room 5.59m (18'4") x 3.61m (11'10") max Fitted with a matching range of base and eye level units with worktop space over, 1+1/2 bowl stainless steel sink unit with single drainer and mixer tap, built-in fridge/freezer and dishwasher, plumbing for automatic washing machine, built-in fan assisted oven, built-in four ring gas hob with extractor hood over, window to side, radiator, vinyl flooring, stairs, double door to rear garden.

Cloakroom Fitted with two piece suite comprising, wash hand basin and low-level WC, tiled splashbacks, radiator, vinyl flooring.

First Floor Landing Fitted carpet, loft hatch, door to:

Family Bathroom Fitted with three piece suite with comprising, panelled bath, pedestal wash hand basin and low-level WC, tiled surround, heated towel rail, window to side, vinyl flooring with sunken ceiling spotlights.

Bedroom 3 2.49m (8'2") max x 2.43m (8') Window to side, radiator, fitted carpet.

Bedroom 2 3.73m (12'3") x 3.57m (11'8") Window to front, radiator, fitted carpet.

Bedroom 1 3.30m (10'10") x 1.31m (4'3") Window to front, built-in double wardrobe(s) with hanging rails, radiator, fitted carpet, TV point, door to :

En-suite Fitted with three piece suite with comprising, pedestal wash hand basin, double shower cubicle with glass screen and low-level WC, tiled surround, heated towel rail, window to front, vinyl flooring with sunken ceiling spotlights.

Outside

Enclosed by brick wall and wooden panelled fence, large paved sun patio with seating area, mainly laid to lawn, gated side access and timber garden shed.

*** If you are considering letting this property for a BUY TO LET please call Fitzjohn Property Rentals on 01733 555520. We can provide you free advice on all aspects of the lettings market including potential rental yields for this property ***

Area Map



Floor Plans



Energy Efficiency Graph

